

# CUSTOM SUIT ORDER FORM



**SFI / FIA APPROVED**

Name: \_\_\_\_\_ Shipping Address: \_\_\_\_\_  
Phone: \_\_\_\_\_ Date: \_\_\_\_\_  
Email: \_\_\_\_\_

(Please download the Sizing Chart File and submit it with this form.)

## STANDARD SUIT FEATURES INCLUDE:

- CUSTOM SIZING
- KNIT LINER INNER COLLAR
- HIDDEN BOOT CUFFS
- FRONT SLASH POCKETS

- 360° ARM, LOWER BACK & CROTCH STRETCH PANELS
- NAME EMBROIDERY (Belt or Chest)
- UP TO 16 EMBROIDERED LOGOS
- PYROTECT LOGO ON EPAULETS, REAR & FRONT COLLAR
- SFI/FIA CERTIFICATION TAG

## ADDITIONAL OPTIONS:

- CUSTOM TO YOUR DESIGN
- EURO LEG CUFFS
- EXTRA NOMEX LAYER

- RACECEIVER / PASSPORT POCKET
- SIDE STRETCH PANELS
- BUILT IN ARM RESTRAINTS

## SUIT OPTIONS



**SFI-1 CUSTOM ONE PIECE** - \$325.00  
295 \*g/m<sup>2</sup> FR Cotton / \*TPP 10

**SFI-5 CUSTOM ONE PIECE** - \$995.00  
250 \*g/m<sup>2</sup> Meta Para Aramid Outer Layer  
180 \*g/m<sup>2</sup> 100% Nomex Inner Layer  
430 \*g/m<sup>2</sup> Total Suit Weight / \*TPP 22.6

**SFI-1 CUSTOM TWO PIECE** - \$375.00  
295 \*g/m<sup>2</sup> FR Cotton / \*TPP 10\*

**SFI-5 CUSTOM TWO PIECE** - \$1125.00  
150 \*g/m<sup>2</sup> 100% Nomex Outer Layer  
180 \*g/m<sup>2</sup> 100% Nomex Inner Layer  
330 \*g/m<sup>2</sup> Total Suit Weight / \*TPP 21.6

**PYRO X INNER LINER** - (+\$375) Adds +70 GSM in weight / Adds \*TPP +7.5 (Upgrade on 2 Layer suits only)



**FIA 8856 - 2000** - \$1395.00  
150 \*g/m<sup>2</sup> 100% Nomex Outer Layer  
140 \*g/m<sup>2</sup> 3D Honeycomb Nomex Inner Layer  
290 \*g/m<sup>2</sup> Total Suit Weight / \*TPP 21.6

**\*g/m<sup>2</sup>** - Grams per square meter refers to the weight of the suit.  
**\*TPP Rating** - Divide this number by 2 to determine the number of seconds before a second degree burn occurs.

**50 \*g/m<sup>2</sup> Non Woven Perforated Middle Layer** (+\$100)

**BODY TYPE**  Male  Female  Child **FIT STYLE**  Slim  Regular  Loose

**STRETCH PANELS**  Side Upper Panels (+\$125)  Side Lower Panels (+\$125)  
(Arm Gusset, Back and Crotch panels are included)

**LEGGING STYLES**  Boot Cut  Euro Cut  Euro Cut w/Elastic

**ADDITIONAL OPTIONS**  Arm Restraint D-Rings (+\$75)  Raceceiver Pocket (+\$35)  
 Passport Pocket (+\$35)

# CUSTOM SUIT ORDER FORM



## SUIT DESIGN OPTIONS

**STANDARD DESIGN OPTIONS:** Select a design from the following options:



Design #1

Design #2

Design #3

Design #4



Design #5

Design #6

Design #7

Design #8

**STANDARD SUIT COLORS:** Write your color selections in the space provided below:



Color 1: \_\_\_\_\_ Color 2: \_\_\_\_\_ Color 3: \_\_\_\_\_ Color 4: \_\_\_\_\_ Color 5: \_\_\_\_\_ Color 6: \_\_\_\_\_ Piping \_\_\_\_\_

# CUSTOM SUIT ORDER FORM

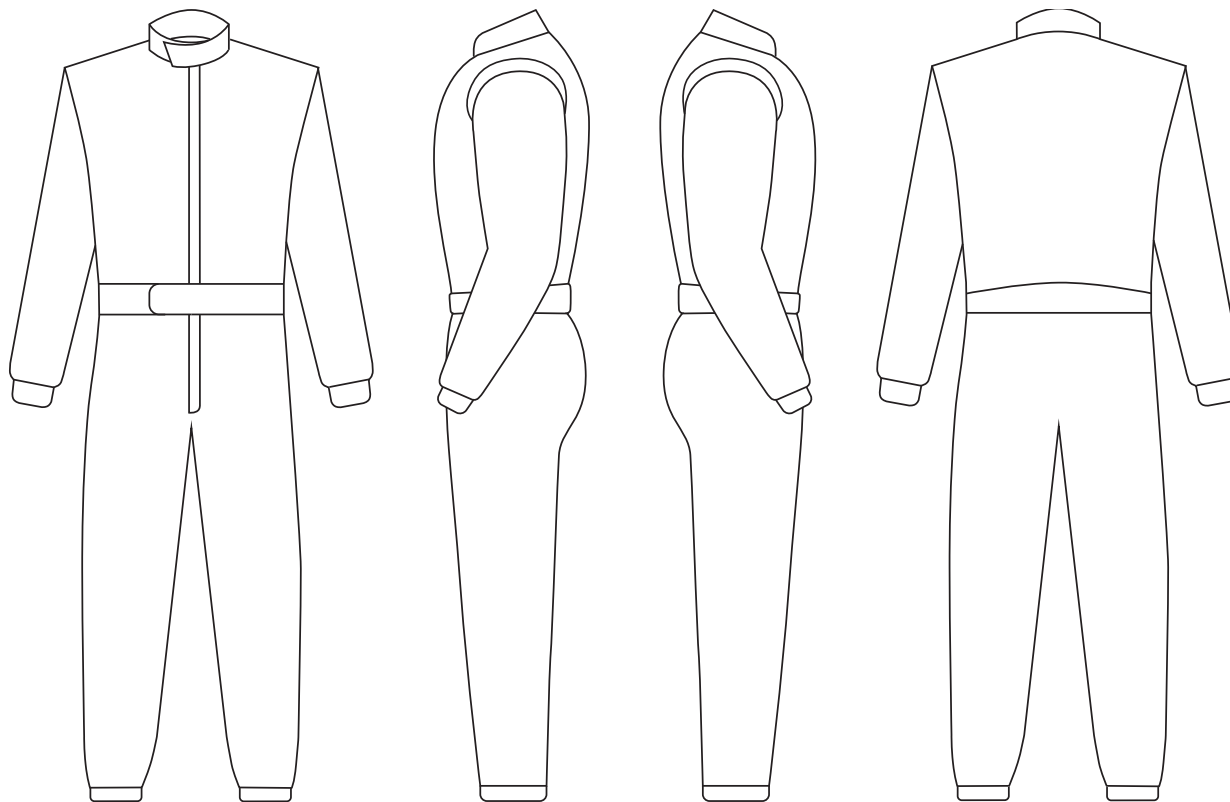
**PYROTECT**

www.pyrotect.com

## SUIT DESIGN OPTIONS

### SUBMIT YOUR OWN DESIGN:

Create your own style, design and colors of your new Pyrotect Custom Racing Suit or you can pick one from over 30 designs at [Pyrotect Suit Designs](#).



### DESIGN

Suit Design: \_\_\_\_\_  My Own Design

Color 1: \_\_\_\_\_ Color 2: \_\_\_\_\_ Color 3: \_\_\_\_\_

Color 4: \_\_\_\_\_ Color 5: \_\_\_\_\_ Color 6: \_\_\_\_\_

Piping: \_\_\_\_\_ Wrist Cuff Color: \_\_\_\_\_ Boot Cuff Color: \_\_\_\_\_

### Notes:

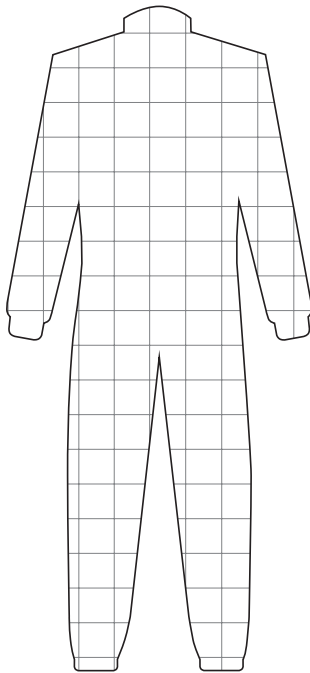
# CUSTOM SUIT ORDER FORM



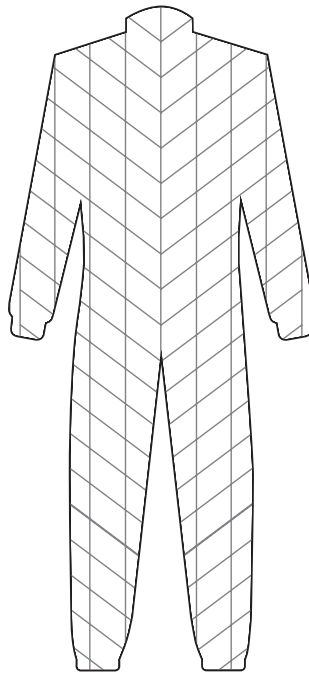
## SUIT DESIGN OPTIONS

### STITCHING DESIGN:

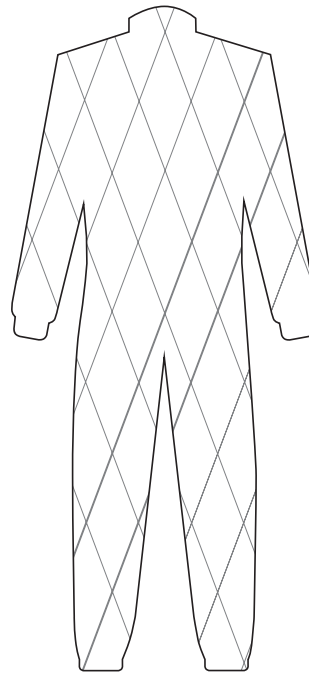
Stitching color will match the main color of the suit unless otherwise specified.



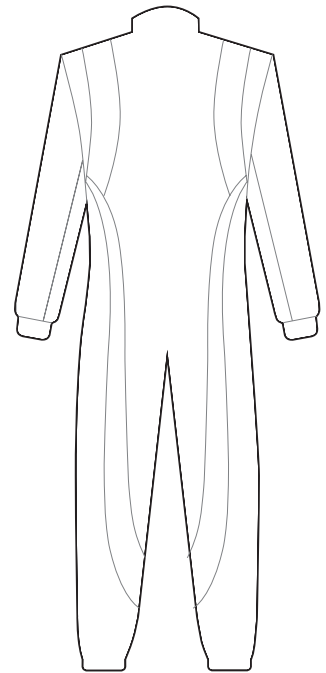
Box Stitching



Diagonal Stitching



Diamond Stitching



Custom Stitching

### EMBROIDERY

Name on Suit: \_\_\_\_\_  Belt  Chest  Other: \_\_\_\_\_

Font Name: \_\_\_\_\_  **BOLD**  *Brush Script*  Other: \_\_\_\_\_

Country Flag:  On Belt  Shoulder  Left  Right  Other: \_\_\_\_\_

### Notes:

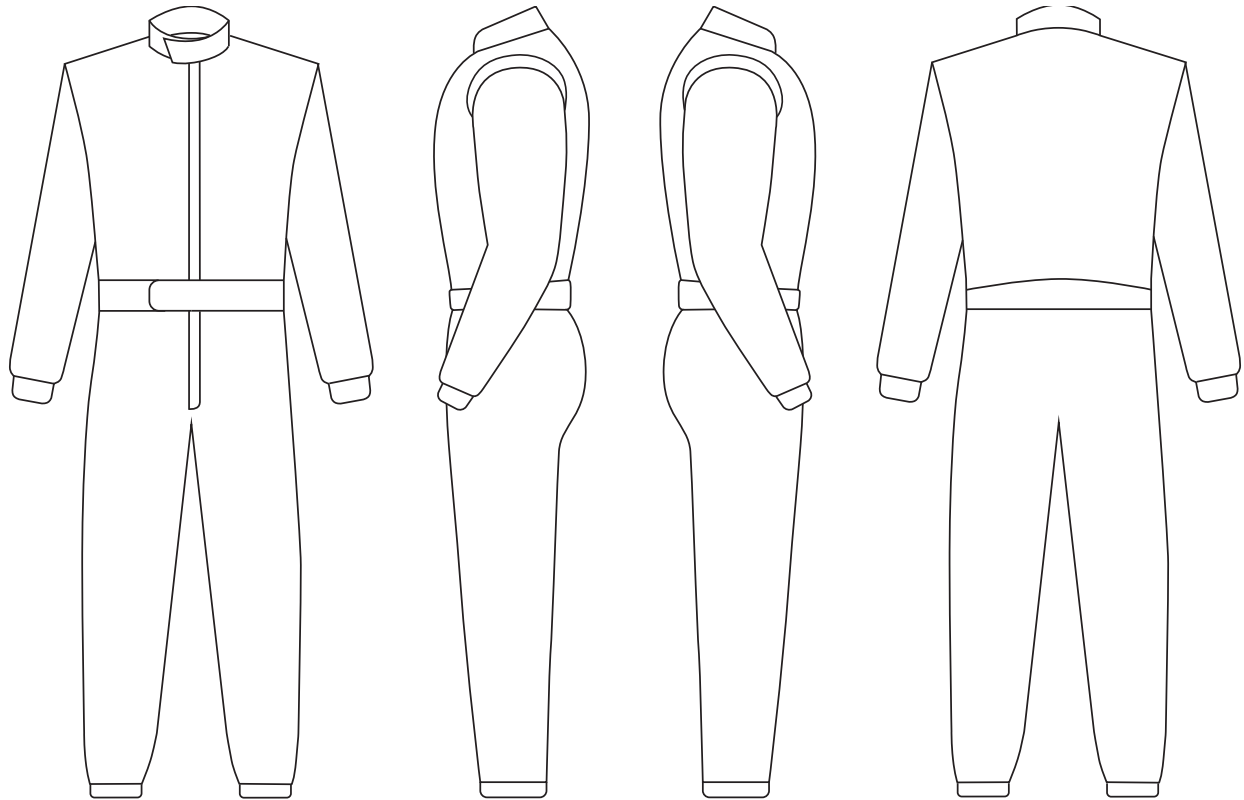
# CUSTOM SUIT ORDER FORM



## SUIT DESIGN OPTIONS

### LOGO PLACEMENT

Logos need to be Approved by Sponsors. Please submit your logos in High Resolution Digital Format (examples: Adobe Photoshop files: .JPG or .TIFF, Adobe Illustrator files .AI or .EPS).



Write the name of the logo on the lines below and write the corresponding number on the drawings above for location. Or you can write in the name or draw the logos on the drawings above illustrating the size and desired location of each logo.

<b>FRONT</b>	<b>LEFT SIDE</b>	<b>RIGHT SIDE</b>	<b>BACK</b>
Logo 1: _____	Logo 1: _____	Logo 1: _____	Logo 1: _____
Logo 2: _____	Logo 2: _____	Logo 2: _____	Logo 2: _____
Logo 3: _____	Logo 3: _____	Logo 3: _____	Logo 3: _____
Logo 4: _____	Logo 4: _____	Logo 4: _____	Logo 4: _____
Logo 5: _____	Logo 5: _____	Logo 5: _____	Logo 5: _____
Logo 6: _____	Logo 6: _____	Logo 6: _____	Logo 6: _____

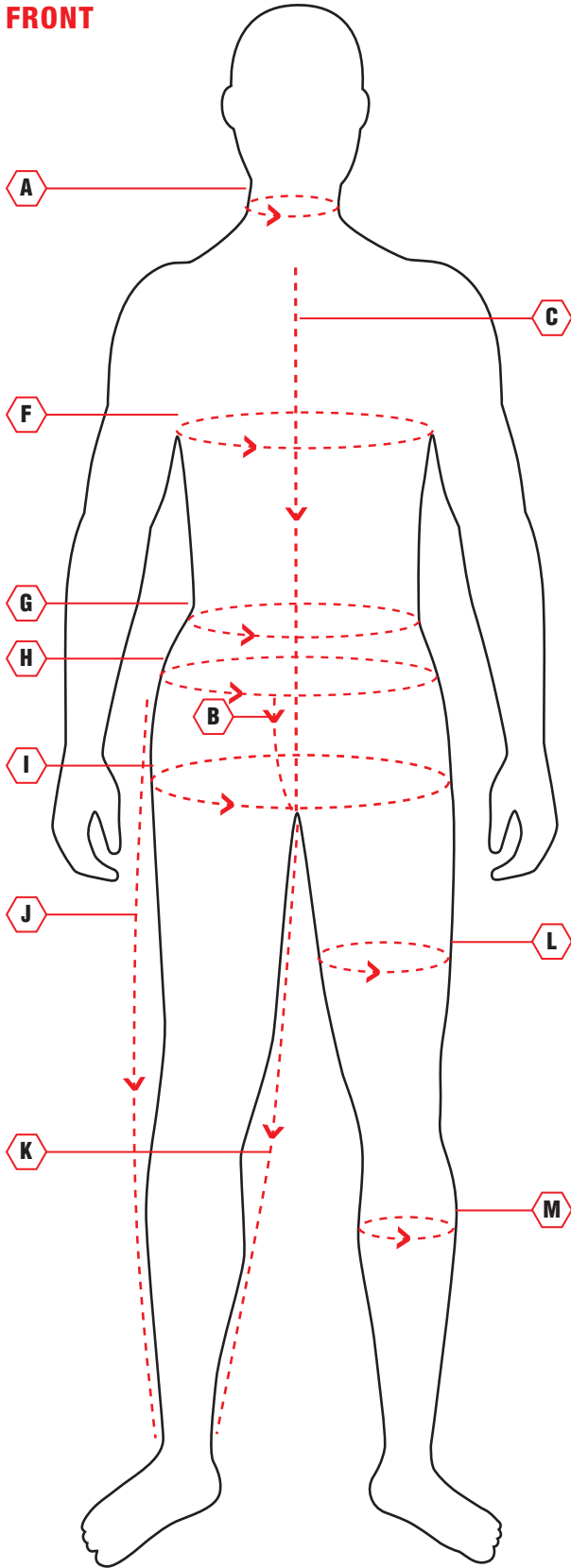
**Notes:**

# CUSTOM SUIT ORDER FORM



## MEN'S CUSTOM SUIT MEASUREMENT FORM

### FRONT



Name: \_\_\_\_\_

Height: \_\_\_\_ ft. \_\_\_\_ in. Weight: \_\_\_\_ lbs.

Email: \_\_\_\_\_ Phone: \_\_\_\_\_

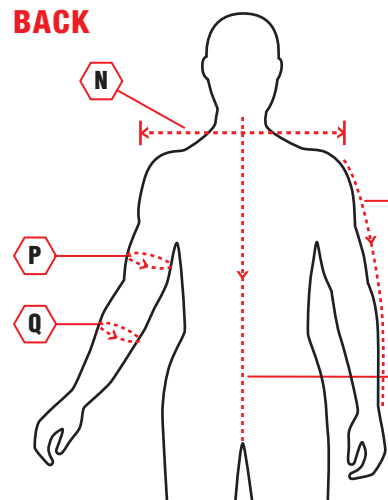
### INSTRUCTIONS:

1. Please do not measure yourself.
2. Wear tight fitting comfortable clothes such as underwear.
3. Use a cloth measuring tape and keep it tight to the skin.
4. Take exact measurements.

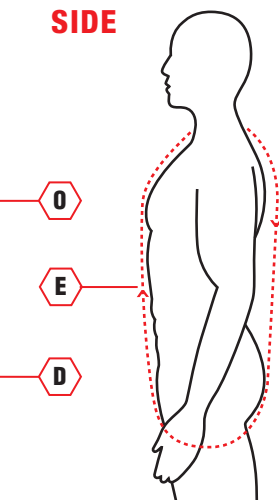
### MEASUREMENTS:

- A \_\_\_\_\_ Neck Circumference - Measure around base of neck
- B \_\_\_\_\_ Front Rise - Crotch seam to waist line
- C \_\_\_\_\_ Torso Length - Crotch seam to middle of collar bone
- D \_\_\_\_\_ Back Length - Crotch seam to base of neck from behind
- E \_\_\_\_\_ Loop Torso Length - From middle of collar bone, down and around crotch seam up to base of neck
- F \_\_\_\_\_ Chest Circumference - Around widest part of chest down
- G \_\_\_\_\_ Stomach Circumference - Around widest part of stomach
- H \_\_\_\_\_ Waist Circumference - Around waist at widest part
- I \_\_\_\_\_ Hips Circumference - Feet together, around hips at widest part
- J \_\_\_\_\_ Outseam - Waistband to ankle bone
- K \_\_\_\_\_ Inseam - Crotch seam to ankle bone
- L \_\_\_\_\_ Upper Thigh - On one knee & measure thigh parallel to floor
- M \_\_\_\_\_ Calf - On one knee and measure around calf at widest
- N \_\_\_\_\_ Shoulder tip to shoulder tip - Across shoulders
- O \_\_\_\_\_ Shoulder tip to wrist - Tip of shoulder to wrist bone
- P \_\_\_\_\_ Bicep - Around the bicep flexed
- Q \_\_\_\_\_ Forearm - Around the forearm

### BACK



### SIDE

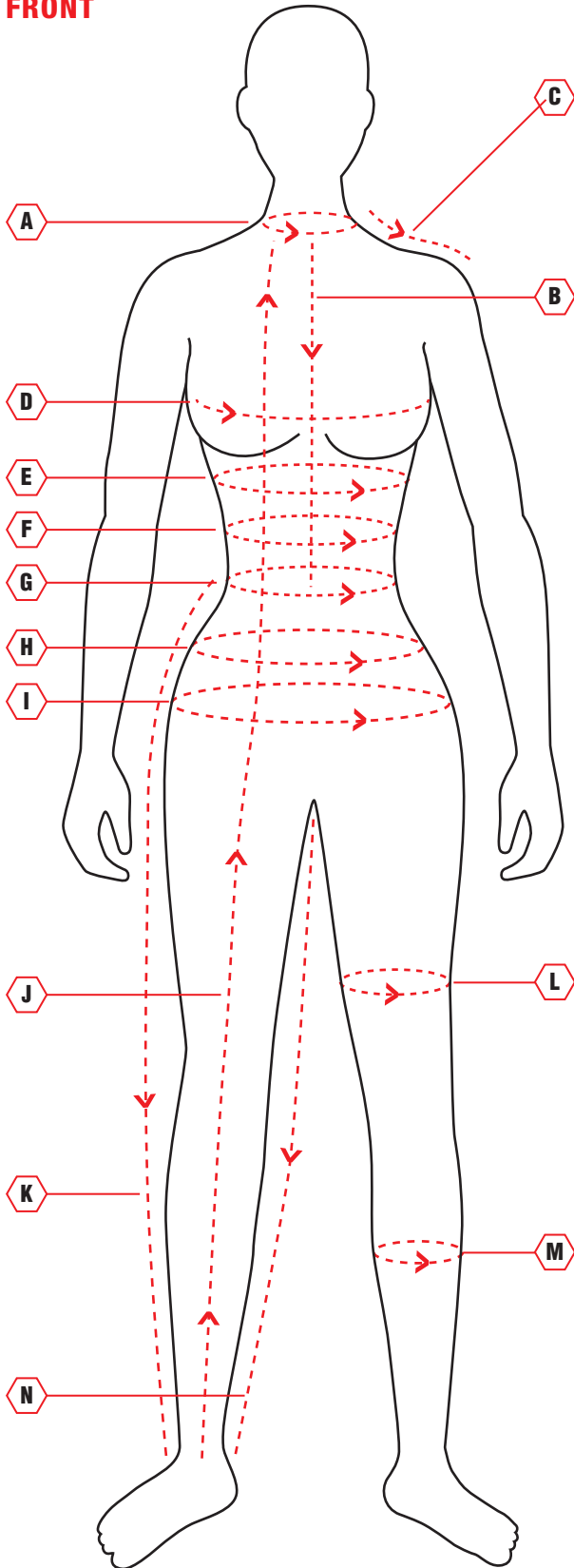


# CUSTOM SUIT ORDER FORM



## WOMEN'S CUSTOM SUIT MEASUREMENT FORM

### FRONT



Name: \_\_\_\_\_

Height: \_\_\_ ft. \_\_\_ in. Weight: \_\_\_ lbs.

Email: \_\_\_\_\_ Phone: \_\_\_\_\_

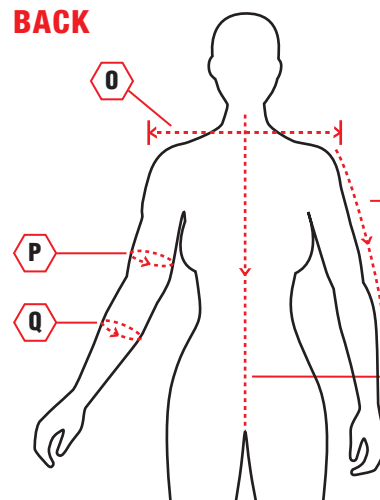
### INSTRUCTIONS:

1. Please do not measure yourself.
2. Wear tight fitting comfortable clothes such as underwear.
3. Use a cloth measuring tape and keep it tight to the skin.
4. Take exact measurements.

### MEASUREMENTS:

- A \_\_\_\_\_ Neck Circumference - Measure around base of neck
- B \_\_\_\_\_ V of Neck to waist
- C \_\_\_\_\_ Measure from sleeve seam to collar
- D \_\_\_\_\_ Chest Circumference - At fullest
- E \_\_\_\_\_ Directly under breasts - At bra band
- F \_\_\_\_\_ Stomach Measurement at fullest
- G \_\_\_\_\_ Waist Circumference at fullest
- H \_\_\_\_\_ Measure Half way between waist and hips
- I \_\_\_\_\_ Hip Circumference at fullest
- J \_\_\_\_\_ Shoulder Seam to bottom of ankle bone
- K \_\_\_\_\_ Outside Seam - waist to bottom of ankle bone
- L \_\_\_\_\_ Upper Thigh Circumference
- M \_\_\_\_\_ Calf Circumference - measure around calf at widest
- N \_\_\_\_\_ Crotch Seam - to bottom of ankle
- O \_\_\_\_\_ Across Shoulders - From shoulder tip to shoulder tip
- P \_\_\_\_\_ Bicep - Around the bicep flexed
- Q \_\_\_\_\_ Forearm - Around the widest point
- R \_\_\_\_\_ Sleeve Length - Measure from shoulder tip to wrist
- S \_\_\_\_\_ Back Length - Crotch seam to base of neck from behind
- T \_\_\_\_\_ Loop Torso Length - From middle of collar bone, down and around crotch seam up to base of neck

### BACK



### SIDE

